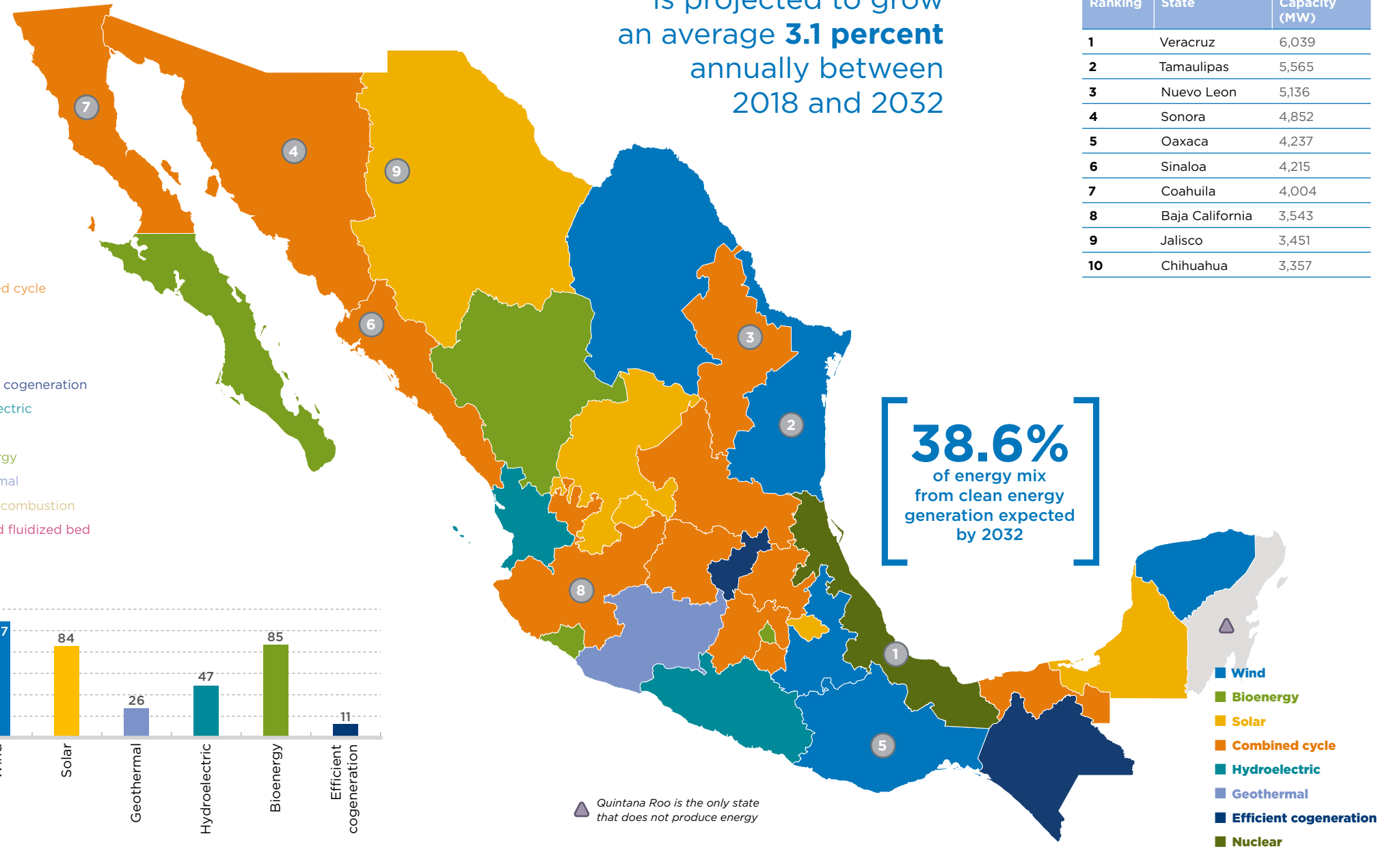


ENERGY MIX 2032 OUTLOOK

According to PRODESEN 2018-2032, 66,912MW of additional installed capacity is required to satisfy energy demand during this period. This represents a total investment of MX\$1.7 billion in the next 15 years. This additional capacity will be comprised of 45 percent conventional technologies, where combined cycle projects will have a major participation with an installed capacity of 28,105MW. The remaining 55 percent will be generated by clean technologies, with wind, solar, cogeneration and nuclear leading generation.

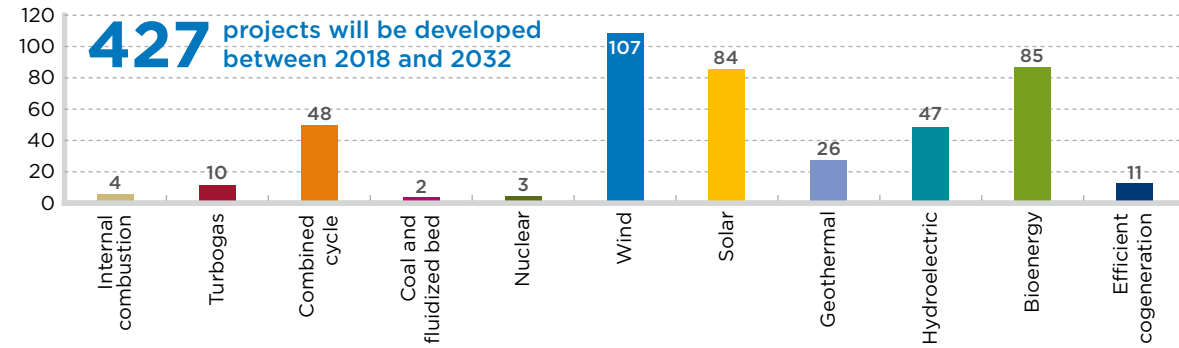
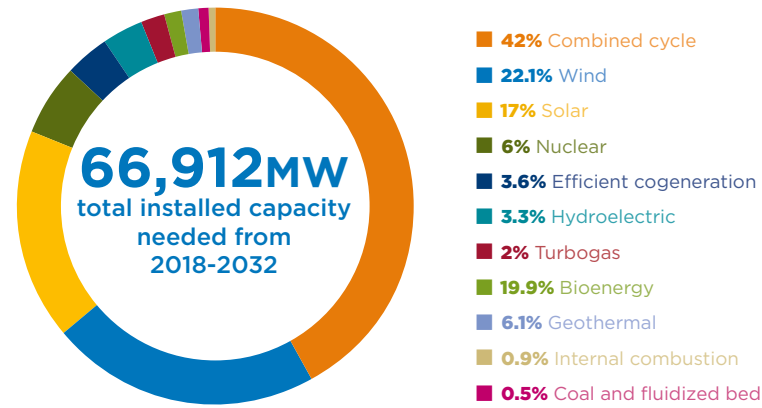
PREDOMINANT TECHNOLOGY PER STATE



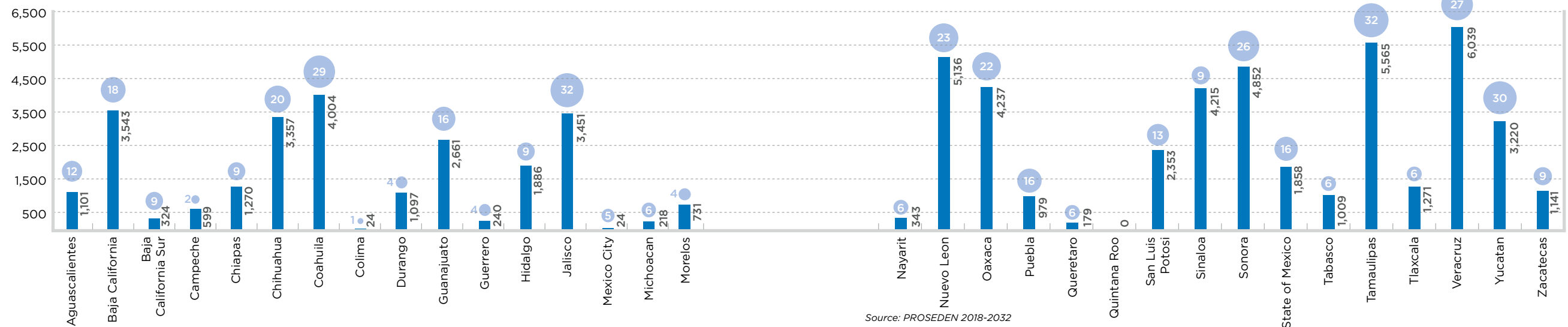
Electricity consumption is projected to grow an average **3.1 percent** annually between 2018 and 2032

TOP 10 POWER PRODUCER STATES

| Ranking | State | Installed Capacity (MW) |
|---------|-----------------|-------------------------|
| 1 | Veracruz | 6,039 |
| 2 | Tamaulipas | 5,565 |
| 3 | Nuevo Leon | 5,136 |
| 4 | Sonora | 4,852 |
| 5 | Oaxaca | 4,237 |
| 6 | Sinaloa | 4,215 |
| 7 | Coahuila | 4,004 |
| 8 | Baja California | 3,543 |
| 9 | Jalisco | 3,451 |
| 10 | Chihuahua | 3,357 |



INSTALLED CAPACITY (MW) AND PROJECTS PER STATE 2018-2032



Source: PROSEEN 2018-2032